

St. Mary's Primary School, Greenlough



Key Stage One

Key Stage One

- Teachers

Mrs Kate Duffy & Miss Nadine O'Boyle

- Number of Children

Primary Three: 19

Primary Four: 22

School Day

- School begins: 8.45am
- Break time: 10.30am
- Lunch time: 12.00pm
- End of school day: 3.00pm

Primary 3 finish 2pm Friday

Breakfast & 2-3 clubs are available

Aims of St. Mary's

To promote high achievement and learning for life by working with children to:

- practice the Catholic faith;
- have high self-esteem - respecting themselves, others and the environment;
- acquire knowledge and skills to be their individual best;
- become highly motivated life-long learners;
- be able to work independently and collaboratively;
- gain technological skills to equip them for the 21st century.

School Attendance

Attendance is crucial to your child's development and school must be notified of any absences. If your child's attendance drops to 90% and no explanation is given, a letter will be sent from school. If the figure drops below 85% a referral will be made to Educational Welfare.

- | | |
|-------------------|--|
| ● 100% Attendance | 0 Days Missed |
| ● 95% Attendance | 9 Days Missed
<i>1wk & 4 days</i> |
| ● 90% Attendance | 19 Days Missed
<i>3wks & 4 Days</i> |
| ● 85% Attendance | 28 Days Missed
<i>5wks & 3 Days</i> |



Education Welfare Service Referral Process



Pre-Referral Process

Preventative actions in accordance with school's attendance policy



Drop in
attendance



Discuss with child
if appropriate



Contact Family by
Letter



Contact Family by
Phone

Ongoing discussion with Education Welfare Service



Attendance
Meeting with the
Family



Review
Attendance



No Improvement



Refer to EWS

Referral Process

Refer to EWS Referral Guidance Form

- This will have been provided to you by your link EWO

Complete Referral Form

- Referrals can only be assessed based on the information provided on the form.
- Ensure all details are included and are accurate
- Insufficient information may result in the child not receiving appropriate support

Submit Referral Form

- Form can be submitted via email or post
- Prior to submission check with your link EWO for confirmation of where to send referral

Referral Confirmation

- EWS will confirm receipt of referral
- If you haven't received confirmation within 10 days contact your link EWO
- EWS Support commences in Partnership with school

Curriculum Overview Year 3

Maths and Numeracy	Count forward and back to 100 (beyond in Term 3) Know addition and subtraction facts to 20 Add and subtract within 100 with exchange Add and subtract money up to £1 Solve problems in all areas of Maths Sort 2D & 3D shapes in different ways Collect, record and present data (Handling Data) Measure using standard units of length, weight, capacity, area and time
Language and Literacy	Reading - use a range of reading strategies to identify unfamiliar words and use a range of comprehension skills to interpret texts Writing - write for a variety of purposes and in a variety of different genre Talking & Listening - formulate, give and respond to guidance, directions and instructions
The Arts	Art & Design -Experiment with a range of media, materials, tools and processes such as drawing, painting and printmaking. Drama -Engage in a range of creative and imaginative role-play situations Music -Work creatively using instruments Songs/hymns/carols for school assembly and ecclesiastical services
The world Around Us	Our WAU Topics are : Magical Me & Keeping Safe, Once Upon a Time & Toys, Amazing Animals.
Religion & PDMU	We Belong Together, God Loves Us, Jesus is the Light Personal Understanding & Health (Feelings & Emotions).
Physical Education	Fundamental skills development, Athletics, Pilates -based activities. Multisport (Thursday)

Curriculum Overview Year 4

Maths and Numeracy	<p>Read, count and order numbers to 1000. Develop the concept of exchange for subtraction. Introduce multiplication & Division. Problem solving within 4 operations of number. Measures - Length, Weight, Capacity, Area and Time 2D & 3D shape + position, movement & direction Handling Data - collecting, representing and interpreting data</p>
Language and Literacy	<p>Reading - use a range of reading strategies to identify unfamiliar words and use a range of comprehension skills to interpret texts and express opinions. Writing - write for a variety of purposes and in a variety of different genre Talking & Listening - formulate, give and respond to guidance, directions and instructions</p>
The Arts	<p>Art & Design - Experiment with a range of media, materials, tools & processes. Drama - imaginative role play situations eg A child from school in the past Music - Sing & perform with simple instruments</p>
The world Around Us	<p>Our WAU Topics are : School is Cool, Wacky Weather, Home Sweet Home, Friendship, Plesiosaurs & Native American Indians</p>
Religion & PDMU	<p>Develop an insight into emotions, attitudes, values and understand how to use these insights to contribute to relationships, family life, the local and global community and family life. Preparation for First Confession & First Holy Communion</p>
Physical Education	<p>Athletics, Dance, Games & Gymnastics, Multisport (Thursday)</p>

Talking and Listening

Some of our KS1 targets;

- Listen to, interpret and retell written texts
- Tell own stories based on personal experiences
- Listen and respond to guidance and instructions
- Express thoughts, feelings and opinions
- Speak audibly and clearly when reading aloud from a variety of sources



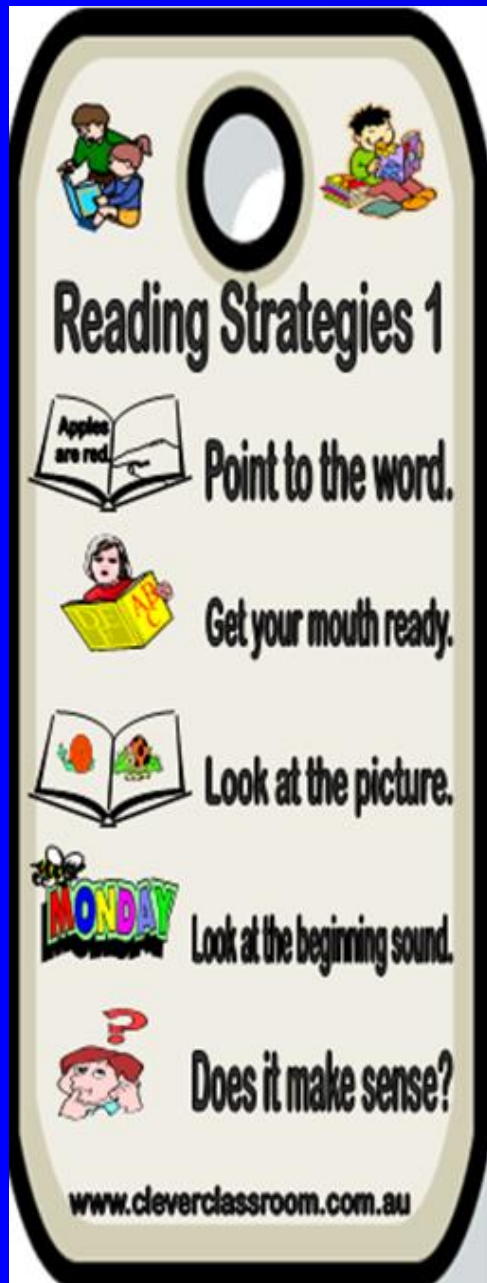


Reading


Some of our KS1 targets;


- Read with some independence for enjoyment and information
- Read, explore and understand a range of texts
- Research and manage information
- Use a range of comprehension skills to interpret and discuss texts
- Express opinions and give reasons based on what has been read
- Use a range of strategies to identify unfamiliar words


Reading





Reading Strategies 1


  

 Point to the word.

 Get your mouth ready.

 Look at the picture.

 Look at the beginning sound.

 Does it make sense?

www.cleverclassroom.com.au



Reading Strategies 2

 Look at the size of the word.

 Sound it out.

 Break the word in to smaller parts.

 Does that word sound right?

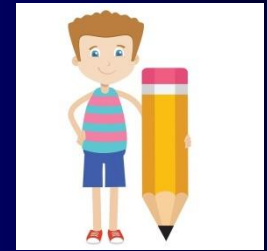
www.cleverclassroom.com.au

LOOK  at the pictures	Get your MOUTH  ready to make the first sound	SLIDE through the whole word 
Spell the word out loud 	 Reread Does it <u>LOOK</u> right? Does it <u>SOUND</u> right? Does it <u>MAKE SENSE</u> ? If not: STOP, go back, and read it again!	Skip hard words and then go back.  Read... Skip... Go back and read...
Try a different VOWEL sound.  a e i o u 	Think of a RHYMING word you do know.  If I know c-a-t spells cat, then h-a-t must spell hat."	 "Chunk it" Look for smaller words hiding inside.

 I wonder.... Ask QUESTIONS to help you think deeper about the story.	Predict Stop reading and think what might come next 	 Infer Think deeper about the meaning of what is read.
 Make Connections Use your schema to better understand	Thinking Strategies Good Readers Use	 Self Monitor Stop and think to make sure you are understanding
Think of the characters' feelings 	 Summarize Wrap up your thinking to remember the important parts	Create a Mental Picture Make a picture in your mind of what the words are saying 



Writing



Some of our KS1 targets;

- Organise, structure and present ideas in writing
- Write for a variety of audiences
- Use a variety of skills to spell words when writing
- Spell correctly a range of familiar, important and regularly occurring words
- Develop competence in grammar and punctuation
- Write in a legible style of handwriting & working towards a cursive style.
- Begin to check written work

Spelling Strategies

Look Cover Say Write Check

**LOOK**
...all the sounds, or parts of the word as you read the word.
three... **th** _ **r** _ **ee**
phonics spelling strategy
twice... **tw** _ **ice**
phonics spelling strategy
enormous... **en** _ **or** _ **mous**
phonics spelling strategy

**COVER**
...the word, try to see the word and all it's sounds in your head.


**SAY**
...each sound or part of the word while revealing a finger.
three... **th** - **r** - **ee**
phonics spelling strategy
twice... **tw** - **ice**
phonics spelling strategy
enormous... **en** - **or** - **mous**
phonics spelling strategy


**WRITE**
...the word in alternating colours.
th - **r** - **ee**
phonics spelling strategy
tw - **ice**
phonics spelling strategy
en - **or** - **mous**
phonics spelling strategy

**CHECK**
...your work.


Problem Solving Strategies

The seven steps to problem-solving

- Step 1** Read the problem.
- Step 2** What do you have to find?
- Step 3** What facts are given?
- Step 4** Which facts do you need?
- Step 5** Make a plan.
- Step 6** Carry out your plan to find an answer.
- Step 7** Check your answer.

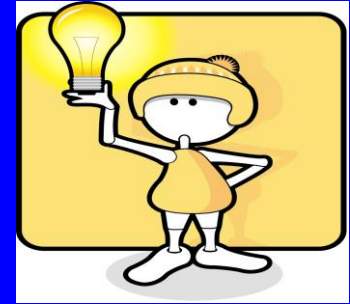




Managing Information

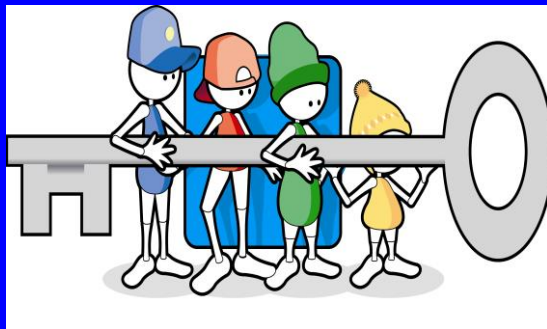


Thinking, Problem Solving
Decision Making



Being Creative

Thinking Skills & Personal Capabilities




Working with Others



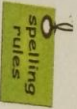
Self Management

Year 3 Homework

 P3 Homework- Week commencing Monday 25th September 2023

Reading - every night as written in your Reading Record
***Please learn your key words in your reading diary each night.**

Spellings - List 4 'ng'



Monday: Spelling Sentences- write 3 sentences using 'ng' words from your spelling list.

Numeracy- Complete Monday Mental Maths



Tuesday: Spelling Sentences- write 3 sentences using 'ng' words from your spelling list.

Numeracy- Complete Tuesday Mental Maths

Wednesday: Complete 'ng' Wordsearch

Numeracy- Complete Wednesday Mental Maths

Thursday: Learning Homework- Topmarks- Robot Addition
<https://www.topmarks.co.uk/addition/robot-addition>

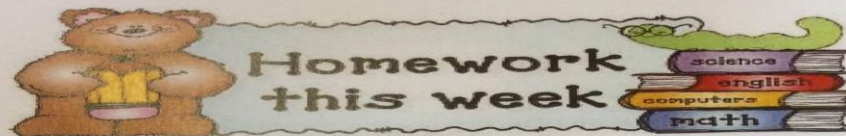
* Spelling Preparation for Friday's Check-up.

*Primary 3 P.E. days will be every Tuesday and Thursday. Children can wear their P.E gear on these days and should wear full school uniform every Monday, Wednesday and Friday.

*Please sign your child's Mental Maths Check-Up from the previous week, which you will find at the back of their homework book and Spelling Check-Up (red spelling book in homework folder).

Any questions or queries please do not hesitate to contact me. Many thanks for your continued support

Year 4 Homework



Year 4 Monday 25th September 2023

You are invited to attend the Key Stage 1 Curriculum Development evening on Wednesday 27th September at 6pm.

P.E. for Year 4 children will now be on Mondays and Thursdays. Children may wear the P.E. uniform on these days.

All weekly homework will be inside a PURPLE A4 book. Please remind your child to bring their reading book and reading diary to school every day. Please return the PURPLE homework book on Thursday of this week for marking.

Monday - Maths - Tuesday list questions 1-10 Mental Maths - count from 550 -650 in fives

Spelling Sentences & Spellings to be learned and written on the Monday section of the sheet.

Reading/ Reading Activity - Look inside your Child's reading record and sign on a nightly basis after having listened to your child read aloud or checked written reading activity.

Tuesday - Maths - Tuesday list questions 1-10 Mental Maths - count backwards from 800 - 720 in twos

Spelling Sentences & Spellings to be learned and written on the Tuesday section of the sheet.

Reading/ Reading Activity - Look inside your Child's reading record and sign on a nightly basis after having listened to your child read aloud or checked written reading activity.

Wednesday - Maths - Wednesday list questions 1-10 Mental Maths - count from 900 - 800 in fives backwards.

Spellings to be learned and written on the Wednesday section of the sheet. Wednesday research to be written on the Wednesday section of the sentences sheet.

Remember to bring PURPLE homework book to school for marking.

Reading/Reading Activity - Look inside your Child's reading record and sign on a nightly basis after having listened to your child read aloud or checked written reading activity.

Thursday - Prepare for Friday spelling check -up. Please remember to sign weekly mental maths check-ups at the back of the PURPLE homework book. **PLEASE BRING LIBRARY BOOK FOR LIBRARY TIME ON FRIDAY.**

Reading/Reading Activity - Look inside your Child's reading record and sign on a nightly basis after having listened to your child read aloud or checked written reading activity. Mental Maths - practice using the add 11 and the add 9 strategy to any number between 0 -100.



Homework Support:

- ✚ Provide a suitable environment
- ✚ Encourage independence
- ✚ Provide supervision
- ✚ Just be the best you can be
- ✚ If your child is struggling, just
Stop and write a note for the
Class teacher.
- ✚ Sign written homework

Mathletics

<https://portal.3plearning.com/welcome>



Keeping You Informed on Progress

Curriculum Evening (term 1) - Initiatives, targets and objectives have been laid out for the year.

Parent Teacher Meetings (term 2) - This will take place again in January. Further details to follow.

School Reports (term 3) - School reports are sent home at the end of the academic year in June.

Books Sent Home - Your child's numeracy and literacy books will be sent home every half term for parents to celebrate their child's completed class work. We ask that parents complete the two stars and a wish template included each half term

If you have any concerns regarding your child's progress or any other matter contact your child's class teacher to arrange a meeting throughout the school year.

Assessment

- Weekly spelling & Mental Maths Tests
- On going Observations and Marking
- Half Term Class Check Ups
- NRIT testing in Years 4 & 6
- End of Year Assessment - PTM & PTE

School is so much more....

- Friendships
- Relationships
- Curricular & Extra Curricular Activities
- Reward Systems - Class & whole School
- Responsibility
- Preparation for Life - Adulthood.

Updates and Information

- All news and information is regularly posted on our school website. All letters issued from school are posted in the parent section of our school website www.stmaryspsgreenlough.com
- Facebook page - Please do not add a comment
 @stmaryspsgreenlough
- School App - Available via our school website
 Schools NI

Questions

If you have any questions in relation to your child's development or seek clarification on the information provided, please contact your child's class teacher by email:

noboyle927@c2ken.net

kduffy613@c2ken.net

Call our school office 028 25 821066